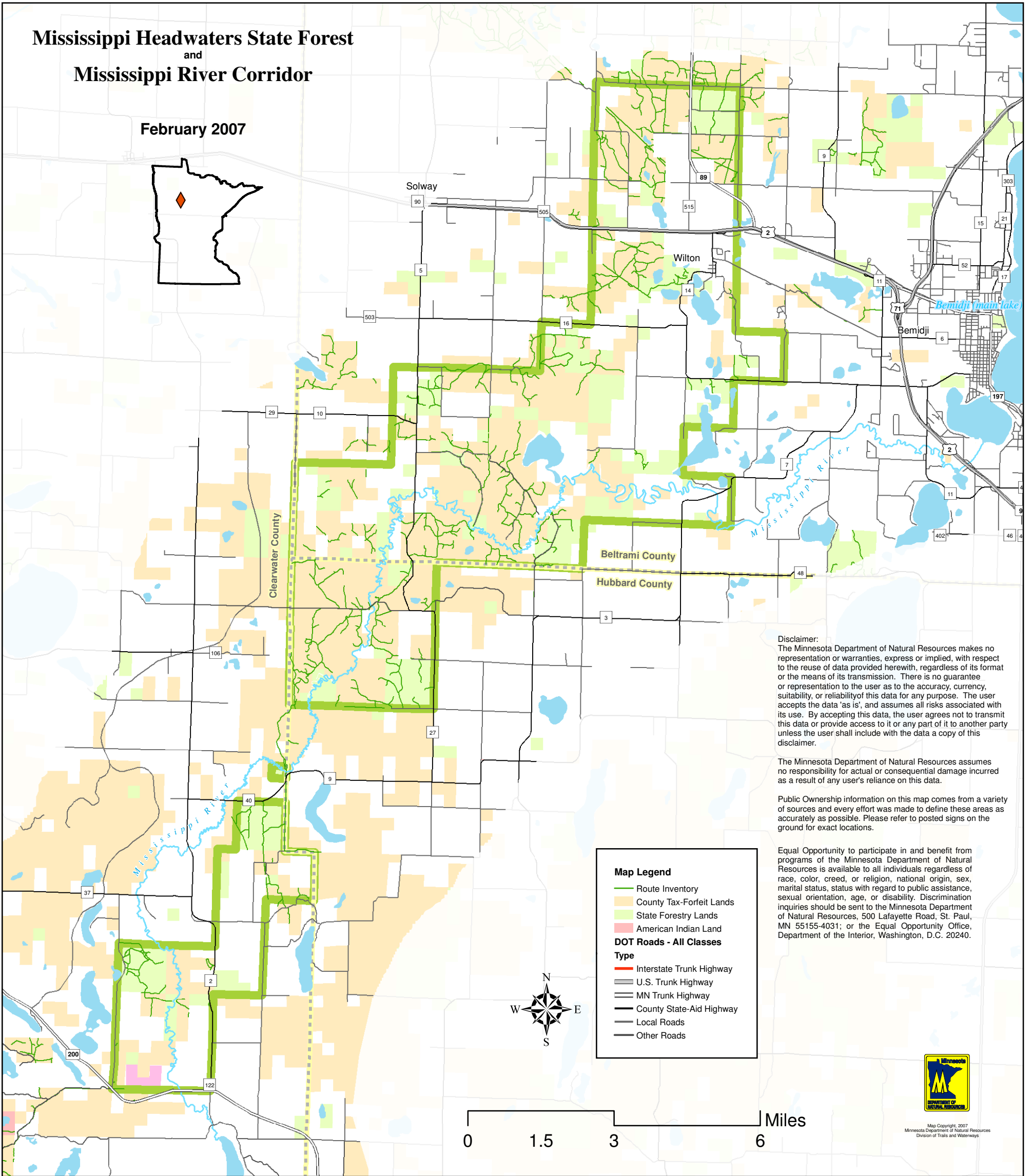
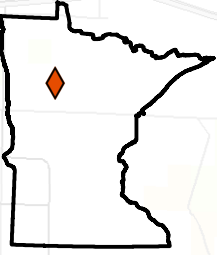


Mississippi Headwaters State Forest and Mississippi River Corridor

February 2007



Disclaimer:
The Minnesota Department of Natural Resources makes no representation or warranties, express or implied, with respect to the reuse of data provided herewith, regardless of its format or the means of its transmission. There is no guarantee or representation to the user as to the accuracy, currency, suitability, or reliability of this data for any purpose. The user accepts the data 'as is', and assumes all risks associated with its use. By accepting this data, the user agrees not to transmit this data or provide access to it or any part of it to another party unless the user shall include with the data a copy of this disclaimer.

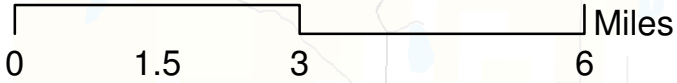
The Minnesota Department of Natural Resources assumes no responsibility for actual or consequential damage incurred as a result of any user's reliance on this data.

Public Ownership information on this map comes from a variety of sources and every effort was made to define these areas as accurately as possible. Please refer to posted signs on the ground for exact locations.

Equal Opportunity to participate in and benefit from programs of the Minnesota Department of Natural Resources is available to all individuals regardless of race, color, creed, or religion, national origin, sex, marital status, status with regard to public assistance, sexual orientation, age, or disability. Discrimination inquiries should be sent to the Minnesota Department of Natural Resources, 500 Lafayette Road, St. Paul, MN 55155-4031; or the Equal Opportunity Office, Department of the Interior, Washington, D.C. 20240.

Map Legend

- Route Inventory
- County Tax-Forfeit Lands
- State Forestry Lands
- American Indian Land
- DOT Roads - All Classes**
- Type**
- Interstate Trunk Highway
- U.S. Trunk Highway
- MN Trunk Highway
- County State-Aid Highway
- Local Roads
- Other Roads



Map Copyright, 2007
Minnesota Department of Natural Resources
Division of Trails and Waterways